


**Rooftop III:
Introspection
Annual sculpture
exhibition
03 September 2011**



The poster features a photograph of a sculpture on a rooftop. The sculpture consists of a large, dark, rectangular block with a smaller, lighter-colored block on top, and a metal frame structure. The background is a bright, sunny rooftop. The text 'ROOFTOP III' is written in large, bold, black letters across the top. Below it, 'INTROSPECTION 2011' is written in a white, sans-serif font. The name 'SYBRAND WIECHERS' is visible in the bottom left corner of the photograph. The bottom of the poster has a yellow floral pattern and an orange banner with contact information.

St. Lorient Fashion & Art Gallery, 492 Fehrsen Street, Brooklyn Circle, Pretoria
www.stlorient.com • e-mail: stlorient@iafrica.com

St. Lorient
PRÊT À PORTER
est. 1979
fashion & art gallery
Tel: 012 460 0284

Lucy Anastasiadis cordially invites you
to Rooftop III Exhibition Entitled
"Introspection 2011"
curated by Gordon Froud

OPENING:
Sat, 3 September 2011 @ 15h00 - 19h00
Concludes: 25 September 2011

Artists: Lukas Thobejane Sanna Swart Craig Muller
Kay Potts Sybrand Wiechers Gordon Froud

Gallery Hours:
Mon-Friday: 09h00-18h00
SAT: 09h00-17h00
SUN: 09h00-13h00



A street map showing the location of the gallery at the intersection of Fehrsen Street and Middle Street, near Brooklyn Mall. Other streets shown include Charles and Myntind.

www.stlorient.com
e-mail: stlorient@iafrica.com

St. Lorient
PRÊT À PORTER
est. 1979
fashion & art gallery
Tel: 012 460 0284 • www.stlorient.co.za

St. Lorient Fashion & Art Gallery, 492 Fehrsen Street, Brooklyn Circle, Pretoria

Names Participating Artist

1. **Gordon Froud**
2. **Graig Muller**
3. **Kay Potts**
4. **Sanna Swart**
5. **Sybrand Wiechers**
6. **Locus Thobejane**

Press Release

Rooftop III: Introspection 2011

Following on the successes of the expansive previous two Rooftop Sculpture exhibitions held at St Lorient Art and Fashion Gallery in Pretoria and The University of Johannesburg Gallery and the Botanical Garden of the University of the Northwest, Rooftop III is a more reflective and introspective exhibition. I have selected 6 artists who have shown on both shows and asked them to each make 3 or 4 outdoor sculptures for these three spaces.

Artists have used materials and forms suitable for the outdoors and have worked on a scale that makes the pieces suitable for a rooftop or garden / parkland setting and have a sense of monumentality to them. The selected artists are: Lukas Thobejane, Sanna Swart, Craig Muller, Kay Potts and Sybrand Wiechers and Gordon Froud. The forms range from a humorous flying pig on a chain to the mechanical quasi-scientific, through to images of violence, floating wave-like forms, a family group and large scale viruses.

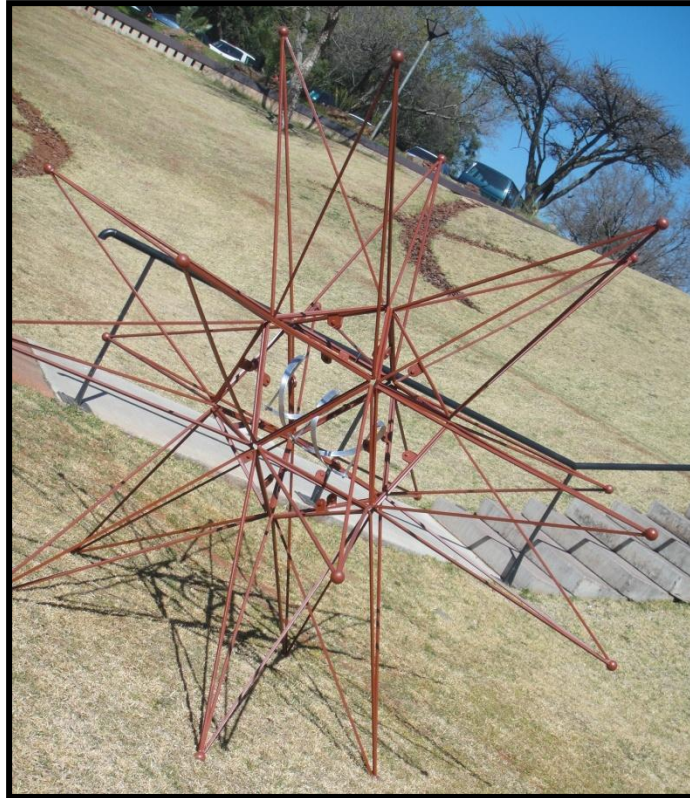
This show has completed its run at University of Jhb Art Gallery and opens on Saturday 3 September at St Lorient Gallery before moving on to the Aardklop Festival in October in Potchefstroom.

Gordon Froud

GORDON FROUD



The last piece takes the form of the HIV Virus made of 20 triangular panels and is complete with a strand of DNA. The forms are extended from each triangle to create a large, 2.5m in diameter, spiked HIV virus, at once beautiful but potentially dangerous..



**Spikey HIV
Metal**

CRAIG MULLER



**The function that defies practicality, is the beginning
of an introduction to art as a window to re-assess
our environment with its workings and our influence on it.
How we manipulate our world.
How we are at its mercy.
How we adapt.**



**Craig Muller
Endurance therapy device for
a wandering ascetic**

KAY POTTS

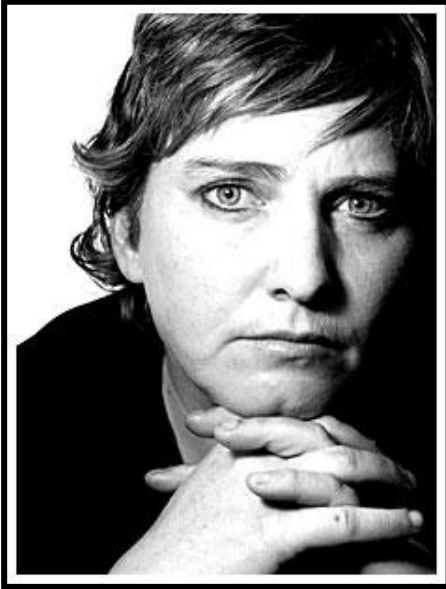


This sculpture is a commentary on how in our world of high connectivity, constant communications access and instant friends... we have never been so distant from our fellow humans
The piece is comprised of faceless, bronze people on steel, comet-like tails.
The tails interact, swoop through each other and visually dance, however, the people never seem to interact or acknowledge on another.

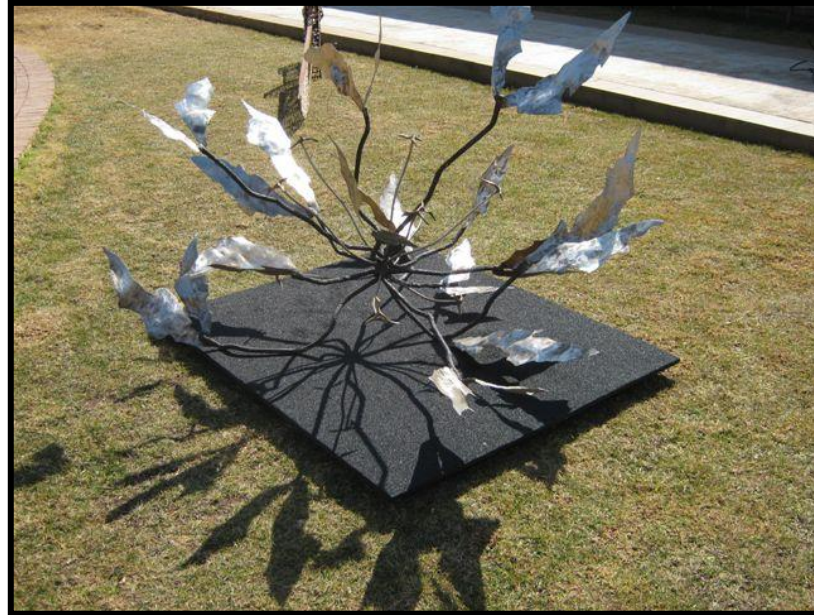


Sanna Swart
Data Stream
steel

SANNA SWART



We are living in a fractured and broken world, constantly under threat of losing ourselves and destroying the last lifeline we have. The world; our SOURCE on the edge of destruction. My sculpture portrays the transience of life. The fragility but yet resilience we need to survive.



**Sanna Swart
Fractured
Steel**

SYBRAND WIECHERS



With this piece I was exploring the idea of sculpture as an object and the narrative in it.

I'm drawing on the archaeological aspect of the object and who the viewer reconstructs the narrative based on the residues of an event.



**Sybrand Wiechers
Just stepped out
Wood n Steel**

LUKAS THOBEJANE



**I choose “Fatherwood & Motherwood”
as subjects, because both are responsible for the family to grow.
So my idea was to develop a little family and tribute this work to our Mother’s
Month.**



Lokus Thobejane
Father wood
Wood & steel